

MM3216 SERIES ~ Wire Wound Chip Common Mode Choke



FEATURES

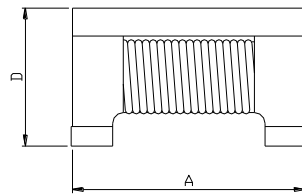
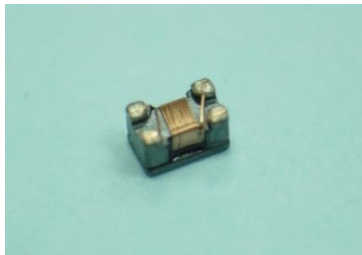
1. Small size and low profile.
2. **High common mode impedance** items can be used considering noise level & signal frequency.
3. Suitable for differential signal line like **USB2.0, IEEE1394 and LVDS**.
4. Lead is not contained in the products. / RoHS compliant .

PART NUMBERING SYSTEM

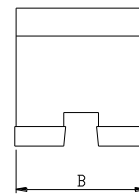
MM	3 2 1 6	—	9 0 0	—	LF
TYPE	DIMENSIONS		IMPEDANCE		LEAD FREE

SHAPES AND DIMENSIONS

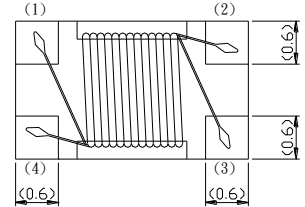
UNIT : mm



$$A=3.2\pm 0.2$$



$$B=1.6\pm 0.2$$



$$D=1.9\pm 0.2$$

SPECIFICATION TABLE

PART NUMBER	IMPEDANCE (at 100MHz/25°C) (Ω)	RATED CURRENT (mA)	DCR (Ω) (Max)	RATED VOLTAGE (Vdc)	INSULATION RESISTANCE (MΩ)	WITHSTAND VOLTAGE (Vdc)
MM3216-670-LF	67±25%	400	0.25	50	10 min.	125
MM3216-900-LF	90±25%	370	0.30	50	10 min.	125
MM3216-161-LF	160±25%	370	0.35	50	10 min.	125
MM3216-221-LF	220±25%	310	0.50	50	10 min.	125
MM3216-261-LF	260±25%	280	0.50	50	10 min.	125
MM3216-601-LF	600±25%	260	0.80	50	10 min.	125
MM3216-102-LF	1000±25%	230	1.00	50	10 min.	125
MM3216-222-LF	2200±25%	200	1.20	50	10 min.	125

- Operating temperature range -40°C to +85°C .
- Electrical specifications at 25°C .
- Packing : 7" reel, machine-ready ,embossed plastic tape (2,000 parts per full reel).