

Surface Mount Power Inductors - SD43-A SERIES



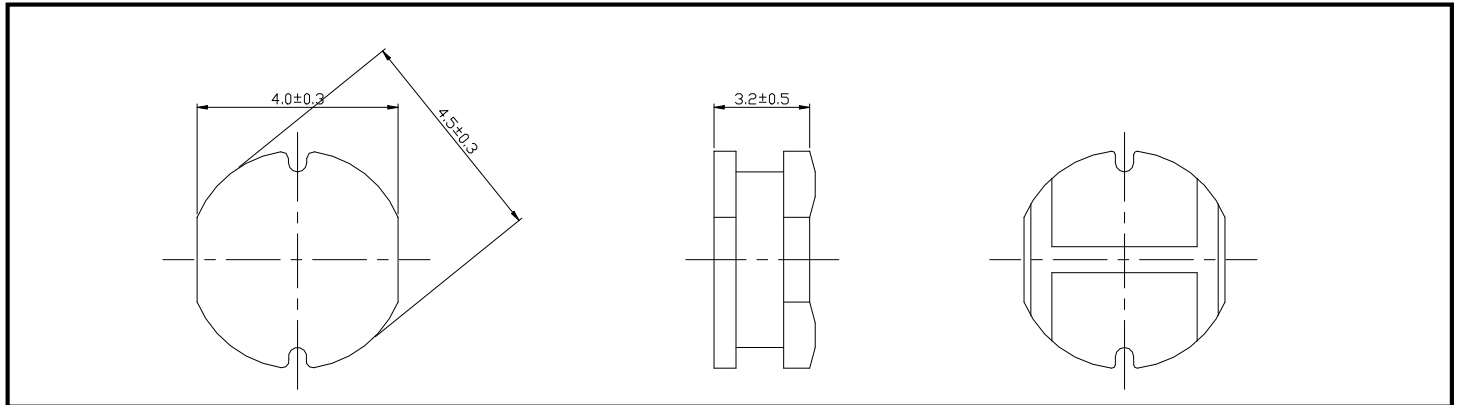
PART NUMBERING SYSTEM

(AEC-Q200)

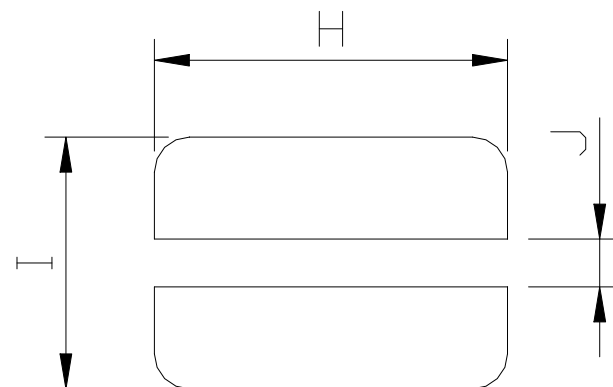
SDR	43	—	330K	—	LF	—	A
TYPE	DIMENSIONS		INDUCTANCE		LEAD FREE		Automotive

SHAPES AND DIMENSIONS

UNIT : mm

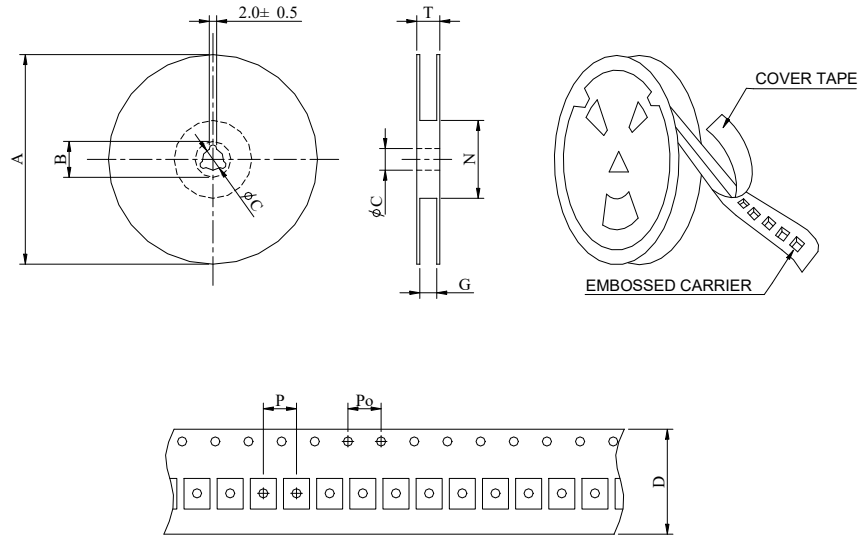


PCB PATTERNS



H = 4.5mm I = 5.0mm J = 1.5mm

PACKAGING SPECIFICATION



SERIES	STAYLE	Q' TY (PCS)	DIMENSIONS (m/m)								
			A	B±0.8	C±0.5	D	G ⁺⁰	N ⁻⁰	P	Po	T
SDR43-A	13-12	1500	330	21	13	12	14	50	8	4	18.4

SPECIFICATION TABLE

PART NUMBER	INDUCTANCE (μ H)	DCR (Ω) (Max.)	IDC (A) (Max.)	TEST FREQ. (MHz)
SDR43-1R0M-LF-A	1.0 \pm 20%	0.033	3.80	7.96
SDR43-1R4M-LF-A	1.4 \pm 20%	0.038	3.30	7.96
SDR43-1R8M-LF-A	1.8 \pm 20%	0.042	2.91	7.96
SDR43-2R2M-LF-A	2.2 \pm 20%	0.047	2.60	7.96
SDR43-2R7M-LF-A	2.7 \pm 20%	0.052	2.43	7.96
SDR43-3R3M-LF-A	3.3 \pm 20%	0.058	2.15	7.96
SDR43-3R9M-LF-A	3.9 \pm 20%	0.076	1.98	7.96
SDR43-4R7M-LF-A	4.7 \pm 20%	0.094	1.70	7.96
SDR43-5R6M-LF-A	5.6 \pm 20%	0.101	1.60	7.96
SDR43-6R8M-LF-A	6.8 \pm 20%	0.117	1.41	7.96
SDR43-8R2M-LF-A	8.2 \pm 20%	0.132	1.26	7.96
SDR43-100M-LF-A	10 \pm 20%	0.182	1.15	2.52
SDR43-120M-LF-A	12 \pm 20%	0.210	1.05	2.52
SDR43-150M-LF-A	15 \pm 20%	0.235	0.92	2.52
SDR43-180M-LF-A	18 \pm 20%	0.338	0.84	2.52
SDR43-220M-LF-A	22 \pm 20%	0.378	0.76	2.52
SDR43-270M-LF-A	27 \pm 20%	0.522	0.71	2.52
SDR43-330K-LF-A	33 \pm 10%	0.540	0.64	2.52
SDR43-390K-LF-A	39 \pm 10%	0.587	0.59	2.52
SDR43-470K-LF-A	47 \pm 10%	0.844	0.54	2.52
SDR43-560K-LF-A	56 \pm 10%	0.937	0.50	2.52
SDR43-680K-LF-A	68 \pm 10%	1.117	0.46	2.52

- DC current at which the inductance drops 10% (typ) from its value without current.
- Operating temperature range -40°C to +125°C ,
- Electrical specifications at 25°C .
- Packing : 13" reel, machine-ready ,embossed plastic tape (1,500 parts per full reel).