



# RU , CU , TU SERIES ~ Cable Clamp EMI Suppression



## FEATURES

1. Internal dimensions from 5mm to 15mm radius .
2. Precision formed sooth surface prevent damage to wire insulation .
3. These cable cores will provide common-mode filtering for multi-strand cables and differential mode filtering for single conductors.
4. Easy installation .
5. Lead Free with RoHS compliant .

## PART NUMBERING SYSTEM

<b>C2L</b>	<b>CU1330</b>	—	<b>B</b>	—	<b>LF</b>
MATERIAL	TYPE & SIZES		CASE COLOR		LEAD FREE

## SHAPES AND DIMENSIONS

UNIT : mm

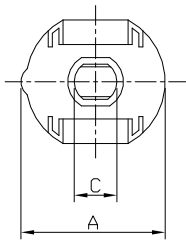


FIG1

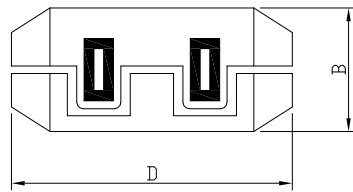


FIG2

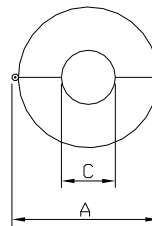


FIG3

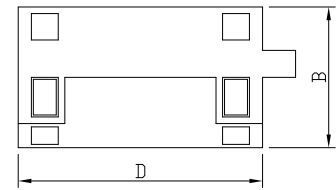
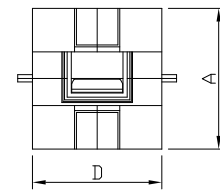
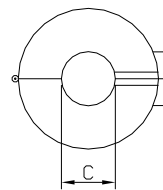
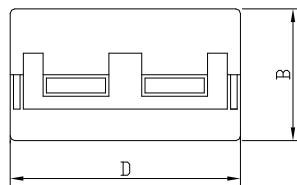
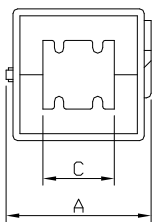


FIG4





## RU , CU , TU SERIES ~ Cable Clamp EMI Suppression



### SPECIFICATION TABLE

PART NUMBER	IMPEDANCE @25MHz (Ω)	IMPEDANCE @100MHz (Ω)	DIMENSIONS				Cable Dia.(mm) Max.	Fig.
			A	B	C	D		
C2L RU50B-LF	80 typ.	140 typ.	15.0±1.0	14.0±1.0	5.2±1.0	23.0±1.0	5.0	2
C2L RU65B-LF	195 typ.	320 typ.	20.5±1.0	20.0±1.0	6.5±1.0	33.0±1.0	6.5	2
C2L RU100B-LF	140 typ.	260 typ.	25.5±1.0	23.5±1.0	10.0±1.0	33.0±1.0	10.0	2
C2L RU130B-LF	160 typ.	260 typ.	31.5±1.0	30.0±1.0	13.0±1.0	33.0±1.0	13.0	2
C2L CU0530B-LF	70 typ.	120 typ.	13.0±1.0	11.8±1.0	5.0±1.0	25.5±1.0	5.0	1
C2L CU0730G-LF	46 typ.	86 typ.	15.5±1.0	14.0±1.0	7.0±1.0	22.0±1.0	7.0	3
C2L CU0930B-LF	110 typ.	210 typ.	19.5±1.0	18.0±1.0	9.0±1.0	35.5±1.0	9.0	1
C2L CU0931G-LF	110 typ.	210 typ.	20.5±1.0	19.5±1.0	9.0±1.0	35.5±1.0	9.0	3
C2L CU1130B-LF	70 typ.	128 typ.	20.5±1.0	21.0±1.0	11.0±1.0	36.0±1.0	11.0	3
C2L CU1330B-LF	80 typ.	140 typ.	23.5±1.0	22.5±1.0	13.0±1.0	36.0±1.0	13.0	1
C4S TU16x13x8B-LF	48 typ.	92 typ.	19.5±1.0	23.0±1.0	8.1±1.0	23.0±1.0	8.0	4
C4S TU16x16x8B-LF	55 typ.	120 typ.	19.5±1.0	23.0±1.0	8.1±1.0	26.0±1.0	8.0	4
C4S TU20x20x10B-LF	38 typ.	82 typ.	24.5±1.0	28.5±1.0	10.2±1.0	20.0±1.0	10.0	4
C4S TU23x14x11B-LF	55 typ.	110 typ.	28.0±1.0	32.0±1.0	11.5±1.0	24.0±1.0	11.5	4
C4S TU25x12x15B-LF	33 typ.	80 typ.	29.0±1.0	33.0±1.0	15.0±1.0	21.5±1.0	15.0	4

- Testing: Impedance is tested on an HP4287A at 25MHz & 100 MHz
- Electrical specifications at 25°C.
- Additional Information: Additional electrical & physical information available upon request.