



## Low Profile Shielded Power Inductors - SDC2D09 SERIES

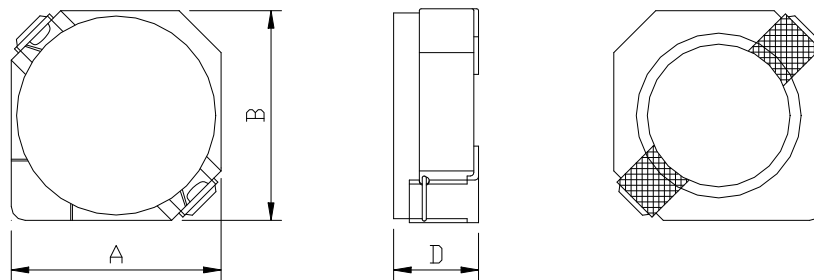


### PART NUMBERING SYSTEM

<b>SDC</b>	<b>2D09</b>	—	<b>3R3N</b>	—	<b>LF</b>
TYPE	DIMENSIONS		INDUCTANCE		LEAD FREE

### SHAPES AND DIMENSIONS

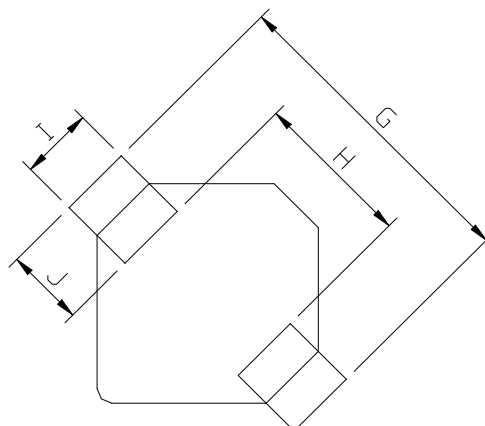
UNIT : mm



**A=3.20 max. B=3.20 max. D=1.0 max.**

### RECOMMENDED PATTERNS

UNIT : mm



**G= 4.3 H= 1.7 I= 1.3 J= 1.3**



## Low Profile Shielded Power Inductors - SDC2D09 SERIES



### ELECTRICAL CHARACTERISTICS :

PART NUMBER	INDUCTANCE ( $\mu$ H)	DCR (m $\Omega$ ) (Max.)	Isat (A) ( Max. )	Irms (A) ( Max. )	Stamp
SDC2D09-1R2N-LF	1.2 $\pm$ 30%	97.5	0.80	1.24	A
SDC2D09-1R5N-LF	1.5 $\pm$ 30%	110	0.73	1.15	B
SDC2D09-1R8N-LF	1.8 $\pm$ 30%	131	0.65	1.06	C
SDC2D09-2N2N-LF	2.2 $\pm$ 30%	144	0.60	1.05	D
SDC2D09-2N7N-LF	2.7 $\pm$ 30%	150	0.53	0.98	E
SDC2D09-3N3N-LF	3.3 $\pm$ 30%	194	0.47	0.84	F
SDC2D09-3N9N-LF	3.9 $\pm$ 30%	225	0.45	0.72	G
SDC2D09-4N7N-LF	4.7 $\pm$ 30%	288	0.41	0.64	H
SDC2D09-5N6N-LF	5.6 $\pm$ 30%	325	0.37	0.59	I
SDC2D09-6N8N-LF	6.8 $\pm$ 30%	425	0.33	0.53	J
SDC2D09-8N2N-LF	8.2 $\pm$ 30%	475	0.30	0.46	K
SDC2D09-100N-LF	10 $\pm$ 30%	538	0.28	0.42	L

- Inductance tested at 100 kHz, 1 Vrms, 0 Adc using an Agilent/HP 4263B LCR meter or equivalent.
- Isat : DC current at which the inductance drops 35% (typ) from its value without current.
- Irms: The actual current when temperature of coil becomes  $\Delta 40^{\circ}\text{C}$ . ( Ta=+25 $^{\circ}\text{C}$  )
- Operating temperature range -40 $^{\circ}\text{C}$  to +125 $^{\circ}\text{C}$  , Electrical specifications at 25 $^{\circ}\text{C}$ .
- Packing : 13" reel, machine-ready ,embossed plastic tape ( 3,500 parts per full reel).