



SDC2D09C SERIES ~ Shielded SMD Power Inductors

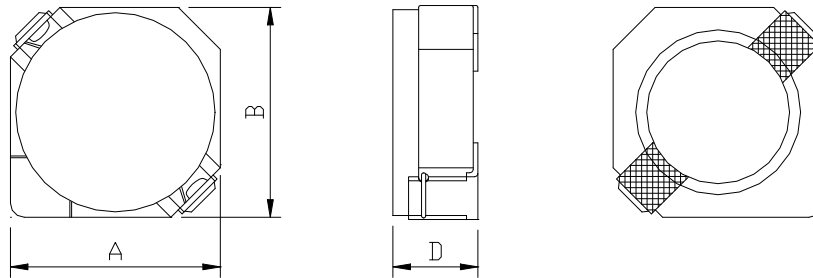


PART NUMBERING SYSTEM

SDC	2D09C	—	4R7N	—	LF
TYPE	DIMENSIONS		INDUCTANCE		LEAD FREE

SHAPES AND DIMENSIONS

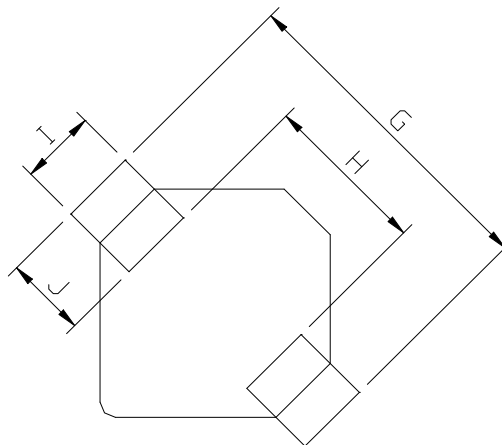
UNIT : mm



A=3.20 max. B=3.20 max. D=1.0 max.

RECOMMENDED PATTERNS

UNIT : mm



G= 4.3 H= 1.7 I= 1.3 J= 1.3

FEATURES

- Low profile (3.2mm Max. square and 1.0mm Max. height)
- Magnetically shielded construction with lead free .
- Ideal for DC-DC converter choke coil for portable equipment (DVD, DSC , cellular , PDA)



Coilmaster Electronics Co., Ltd.

3F No.211, Huan Bei Rd. Chung Li District , Taoyuan City, Taiwan

Tel : +886-3-422-8279

Fax : +886-3-452-5688

E-mail : info@coilmaster.com.tw

Web Site : www.coilmaster.com.tw

SDC2D09C SERIES ~ Shielded SMD Power Inductors



ELECTRICAL CHARACTERISTICS :

PART NUMBER	INDUCTANCE (μ H)	DCR (m Ω) (Max.)	Isat (mA)	Irms (mA)	Stamp
SDC2D09C-1R2N-LF	1.2 \pm 30%	78.0	830	1550	A
SDC2D09C-1R5N-LF	1.5 \pm 30%	88.0	700	1350	B
SDC2D09C-2R4N-LF	1.8 \pm 30%	119.0	580	1100	C
SDC2D09C-3R3N-LF	3.3 \pm 30%	174.0	500	900	D
SDC2D09C-4R7N-LF	4.7 \pm 30%	209.0	420	840	E
SDC2D09C-6R4N-LF	3.3 \pm 30%	290.0	360	650	F
SDC2D09C-8R2N-LF	8.2 \pm 30%	360.0	3200	600	G
SDC2D09C-100P-LF	10 \pm 25%	500.0	300	510	H
SDC2D09C-120P-LF	12 \pm 25%	550.0	270	450	I
SDC2D09C-150P-LF	15 \pm 25%	650.0	240	420	J
SDC2D09C-180P-LF	18 \pm 25%	770.0	220	380	K
SDC2D09C-220P-LF	22 \pm 25%	940.0	200	350	L
SDC2D09C-270P-LF	27 \pm 25%	1110.0	160	320	M

- Inductance tested at 100 kHz, 1 Vrms, 0 Adc using an Agilent/HP 4263B LCR meter or equivalent.
- Isat : DC current at which the inductance drops 20% (typ) from its value without current.
- Irms: The actual current when temperature of coil become $\Delta 40^{\circ}\text{C}$. (Ta=+25 $^{\circ}\text{C}$)
- Operating temperature range : -40 $^{\circ}\text{C}$ to + 125 $^{\circ}\text{C}$
- Packing : 13" reel, machine-ready ,embossed plastic tape (3,500 parts per full reel).