



Low Profile Shielded Power Inductors - SDC3D11 SERIES

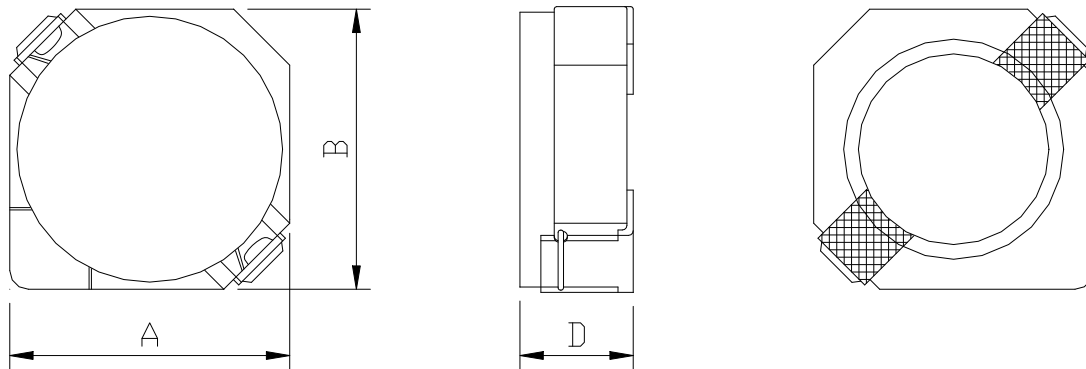


PART NUMBERING SYSTEM

SDC	3D11	—	100N	—	LF
TYPE	DIMENSIONS		INDUCTANCE		LEAD FREE

SHAPES AND DIMENSIONS

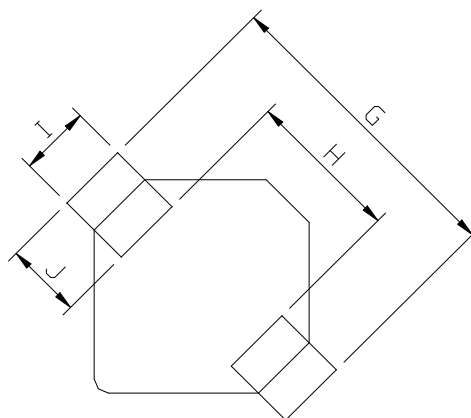
UNIT : mm



A=4.0 max. B=4.0 max. D=1.2 max.

RECOMMENDED PATTERNS

UNIT : mm



G= 5.2 H= 2.4 I= 1.5 J= 1.4

Low Profile Shielded Power Inductors - SDC3D11 SERIES



ELECTRICAL CHARACTERISTICS :

PART NUMBER	INDUCTANCE (μ H)	DCR (m Ω) (Max.)	Isat (A) (Max.)	Irms (A) (Max.)	TEST FREQ. (Freq.)
SDC3D11-2R7N-LF	2.7 \pm 30%	65	0.53	1.82	100KHz
SDC3D11-4R7N-LF	4.7 \pm 30%	95	0.40	1.38	100KHz
SDC3D11-6R8N-LF	6.8 \pm 30%	150	0.34	1.05	100KHz
SDC3D11-8R2N-LF	8.2 \pm 30%	190	0.32	0.93	100KHz
SDC3D11-100N-LF	10 \pm 30%	200	0.28	0.90	100KHz
SDC3D11-120N-LF	12 \pm 30%	230	0.25	0.81	100KHz
SDC3D11-150N-LF	15 \pm 30%	320	0.23	0.68	100KHz
SDC3D11-180N-LF	18 \pm 30%	400	0.21	0.58	100KHz
SDC3D11-220N-LF	22 \pm 30%	450	0.19	0.53	100KHz
SDC3D11-270N-LF	27 \pm 30%	650	0.17	0.48	100KHz
SDC3D11-330N-LF	33 \pm 30%	700	0.15	0.41	100KHz
SDC3D11-390N-LF	39 \pm 30%	850	0.14	0.40	100KHz

- Isat : DC current at which the inductance drops 35% (typ) from its value without current.
- Irms: The actual current when temperature of coil becomes $\Delta 40^{\circ}\text{C}$. ($T_a = +25^{\circ}\text{C}$)
- Operating temperature range -40°C to $+125^{\circ}\text{C}$, Electrical specifications at 25°C .
- Packing : 13" reel, machine-ready ,embossed plastic tape (2,000 parts per full reel).