

SQH2510 SERIES ~ Low Profile SMD Power Inductors

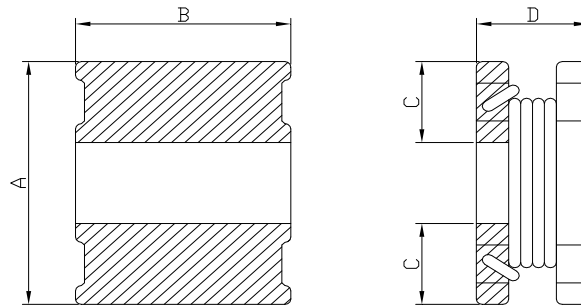


PART NUMBERING SYSTEM



SHAPES AND DIMENSIONS

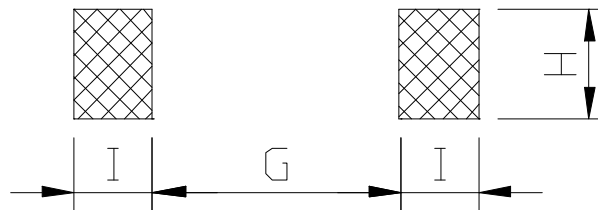
UNIT : mm



A=2.7 Max. B=2.3 Max. C=0.8 Typ. D=1.05 Max

RECOMMENDED PATTERNS

UNIT : mm



G=0.8 Ref. H=2.5 Ref. I=1.2 Ref.

FEATURES

1. **Very small power inductor** - only 1.05 mm high, 2.5 mm square.
2. Handles current **up to 2.0 Asat, 1.9 Arms**
3. Inductance range from **1.0uH to 22uH**
4. **RoHS-compliant** – 260°C compatible



SQH2510 SERIES ~ Low Profile SMD Power Inductors



SPECIFICATION TABLE

PART NUMBER	INDUCTANCE (μ H)	DCR (Ω) (Max.)	Isat (mA) (Max.)	Irms (mA) (Max.)	Test Freq. (Hz)
SQH2510-1R0M-LF	1.0 \pm 20%	0.14	2.00	1.90	1MHz/0.25V
SQH2510-1R5M-LF	1.5 \pm 20%	0.19	1.80	1.64	1MHz/0.25V
SQH2510-2R2M-LF	2.2 \pm 20%	0.29	1.40	1.60	1MHz/0.25V
SQH2510-3R3M-LF	3.3 \pm 20%	0.37	1.20	1.10	1MHz/0.25V
SQH2510-4R7M-LF	4.7 \pm 20%	0.49	1.00	1.02	1MHz/0.25V
SQH2510-5R6M-LF	5.6 \pm 20%	0.60	0.96	0.88	1MHz/0.25V
SQH2510-6R8M-LF	6.8 \pm 20%	0.76	0.84	0.82	1MHz/0.25V
SQH2510-100M-LF	10 \pm 20%	0.99	0.70	0.74	1MHz/0.25V
SQH2510-220M-LF	22 \pm 20%	2.27	0.49	0.46	1MHz/0.25V

- Inductance using an Agilent/HP 4284A LCR meter or equivalent.
- Isat: DC current at which the inductance drops 10% (max) from its value without current.
- Irms: Current that causes specified temperature rise from 25°C ambient.
- Operating temperature range -40°C to +105°C ,
- Electrical specifications at 25°C .