

Surface Mount Balun Transformers - SRIDB4430 SERIES



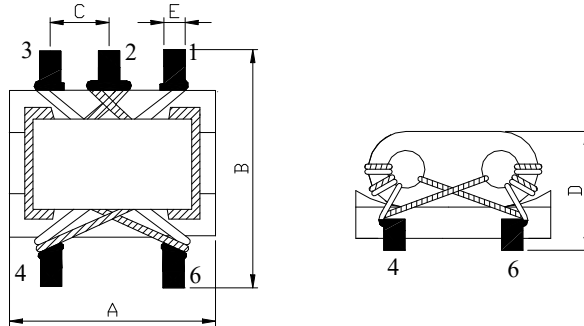
FEATURES

- * Pair wire coil for high stability.
- * Base pin terminal treated, allowing mounting as is on a PCB.

APPLICATIONS

- * Double balance mixers, broad-band transformers, impedance transformers, etc.

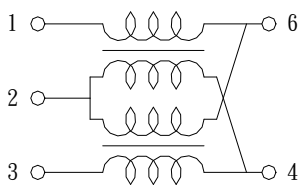
SHAPES AND DIMENSIONS



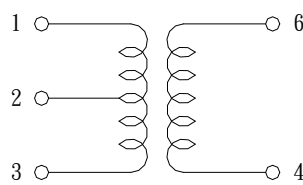
UNIT : mm

A=4.5 Max. B=5.5 Max. C=1.5±0.3 D=3.5 Max. E=0.5Ref.

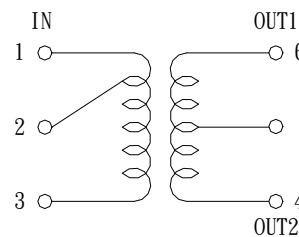
PIN CONNECTION



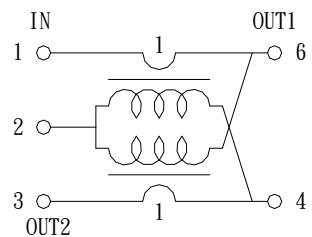
Double Balanced
Fig. 1



Mixer Transformer
Fig. 2

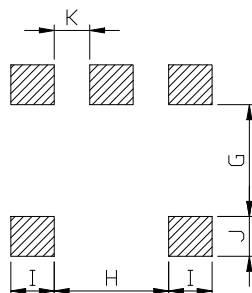


Distributor
Fig. 3



Distributor Coupler
Fig. 4

PCB LAYOUT



UNIT : mm

G=3.5 Ref. H=1.9Ref. I=1.1 Ref. J=1.0 Ref. K=0.4 Ref.



Surface Mount Balun Transformers - SRIDB4430 SERIES



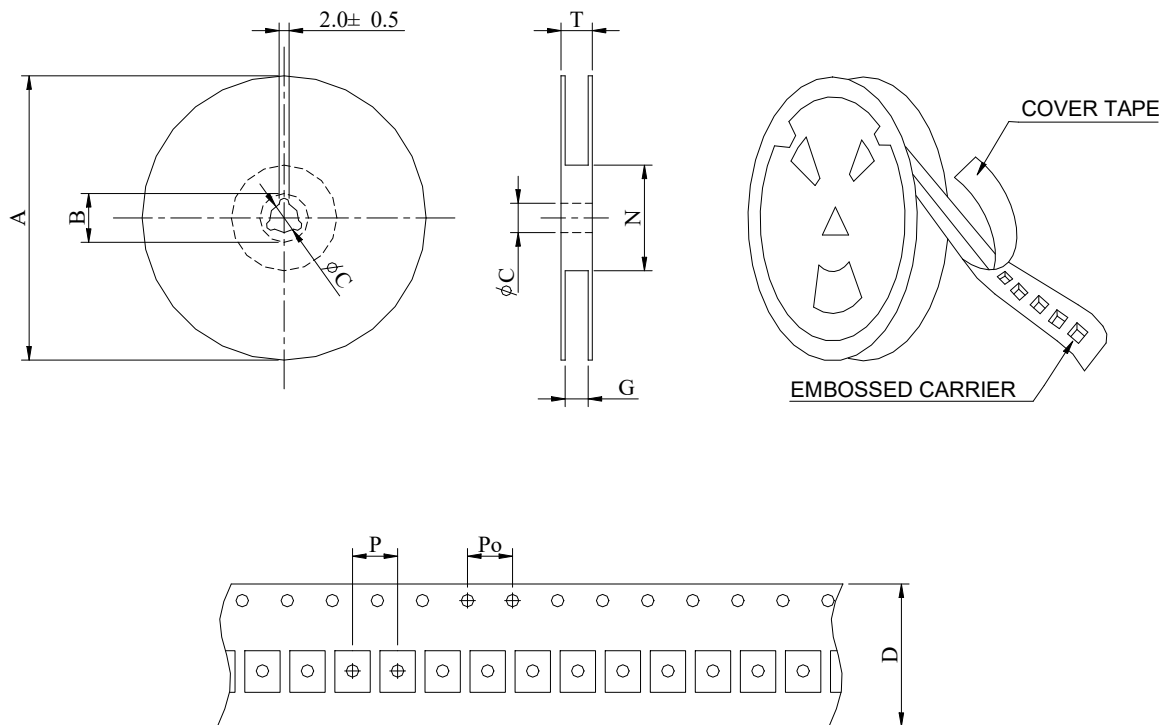
SPECIFICATION TABLE

PART NUMBER	WINDING TURNS	OPERATING FREQUENCY RANGE (MHz)	INSERTION LOSS (dB)	PIN CONNECTION Fig.
SRIDB 4030-002A-LF	2Turns	50 MHz~1GHz	3.5dB Max.	1
SRIDB4030-003A-LF	3Turns	30 MHz~1GHz	4.0dB Max.	1
SRIDB 4030-004A-LF	4Turns	20 MHz~1GHz	4.0dB Max.	1
SRIDB4030-1R5B-LF	1.5Turns	50 MHz~600 MHz	5.0dB Max.	2
SRIDB4030-002B-LF	2Turns	50 MHz~1GHz	3.5dB Max.	2
SRIDB4030-2R5B-LF	2.5Turns	50 MHz~600 MHz	6.0dB Max.	2
SRIDB4030-3R5C-LF	3.5Turns	50 MHz~500 MHz	10.0dB Max.	3
SRIDB4030-4R5C-LF	4.5Turns	50 MHz~450 MHz	12.0dB Max.	3
SRIDB4030-5R5C-LF	5.5Turns	50 MHz~400 MHz	15.0dB Max.	3
SRIDB4030-002D-LF	2Turns	50 MHz~800 MHz	6.5dB Max.	4
SRIDB4030-1007A-LF	2Turns	25 MHz~2GHz	3.0dB Max.	1
SRIDB4030-1009A-LF	3Turns	6.0 MHz~2 GHz	3.0dB Max.	1
SRIDB4030-1006A-LF	3Turns	150 MHz~2.3 GHz	3.0dB Max.	1
SRIDB4030-1010A-LF	4Turns	3.5 MHz~2GHz	3.0dB Max.	1
SRIDB4030-1018A-LF	5Turns	2.0 MHz~2 GHz	3.0dB Max.	1
SRIDB4030-1021B-LF	1.5Turns	20 MHz~2GHz	3.0dB Max.	2
SRIDB4030-1022B-LF	2.5Turns	4.5 MHz~3.3 GHz	3.0dB Max.	2
SRIDB4030-1023B-LF	3.5Turns	2.3 MHz~2.7 GHz	3.0dB Max.	2
SRIDB4030-1024B-LF	4.5Turns	1.5 MHz~2.4 GHz	3.0dB Max.	2

Surface Mount Balun Transformers - SRIDB4430 SERIES



PACKAGING SPECIFICATION



SERIES	STAYLE	Q'TY (PCS)	DIMENSIONS (m/m)								
			A	B	C	D	G ⁺⁰	N ⁰	P	Po	T
SRIDB4030	12	2000	330				12.5	100	12	4	