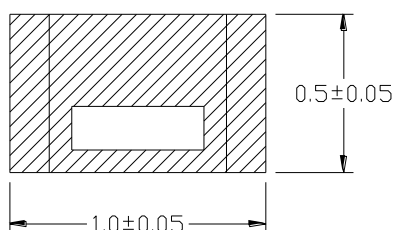


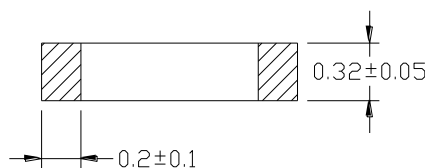
MF1005T SERIES – Thin Film Ceramic Chip Inductors



TOP VIEW



FRONT VIEW



PART NUMBER	INDUCTANCE (nH) 100MHz	Tolerance (% or nH)	Q Min.	SRF (GHz) Min.	DCR (Ω) (Max.)	IDC (mA) (Max.)
MF1005T-0N2□-LF	0.2	0.1/0.2/0.3nH	13@500MHz	14	0.10	800
MF1005T-0N4□-LF	0.4	0.1/0.2/0.3nH	13@500MHz	14	0.10	800
MF1005T-0N8□-LF	0.8	0.1/0.2/0.3nH	13@500MHz	14	0.15	700
MF1005T-1N0□-LF	1.0	0.1/0.2/0.3nH	13@500MHz	12	0.15	700
MF1005T-1N2□-LF	1.2	0.1/0.2/0.3nH	13@500MHz	12	0.15	700
MF1005T-1N5□-LF	1.5	0.1/0.2/0.3nH	13@500MHz	10	0.25	700
MF1005T-1N6□-LF	1.6	0.1/0.2/0.3nH	13@500MHz	10	0.25	560
MF1005T-1N8□-LF	1.8	0.1/0.2/0.3nH	13@500MHz	10	0.25	560
MF1005T-2N0□-LF	2.0	0.1/0.2/0.3nH	13@500MHz	8	0.35	560
MF1005T-2N2□-LF	2.2	0.1/0.2/0.3nH	13@500MHz	8	0.35	440
MF1005T-2N7□-LF	2.7	0.1/0.2/0.3nH	13@500MHz	8	0.35	440
MF1005T-3N1□-LF	3.1	0.1/0.2/0.3nH	13@500MHz	6	0.45	380
MF1005T-3N3□-LF	3.3	0.1/0.2/0.3nH	13@500MHz	6	0.45	380
MF1005T-3N6□-LF	3.6	0.1/0.2/0.3nH	13@500MHz	6	0.55	380
MF1005T-3N9□-LF	3.9	0.1/0.2/0.3nH	13@500MHz	6	0.55	340
MF1005T-4N7□-LF	4.7	0.1/0.2/0.3nH	13@500MHz	6	0.65	320
MF1005T-5N6□-LF	5.6	0.1/0.2/0.3nH	13@500MHz	6	0.85	280
MF1005T-5N9□-LF	5.9	0.1/0.2/0.3nH	13@500MHz	6	0.85	280
MF1005T-6N8□-LF	6.8	0.1/0.2/0.3nH	13@500MHz	6	1.05	260
MF1005T-7N2□-LF	7.2	0.1/0.2/0.3nH	13@500MHz	6	1.05	260
MF1005T-8N0□-LF	8.0	0.1/0.2/0.3nH	13@500MHz	5.5	1.25	220

- Inductors tolerance range : 0.1nH ; 0.2nH ; 0.3nH ; ±1% ; ±2% ; ±3% ; ±5%.
- Test equipment : Agilent/HP-4287A LCR meter or equivalent .
- Packing : 7" reel, machine-ready ,embossed plastic tape (10,000 parts per full reel).
- Operating Temperature Range : -40°C to +105°C

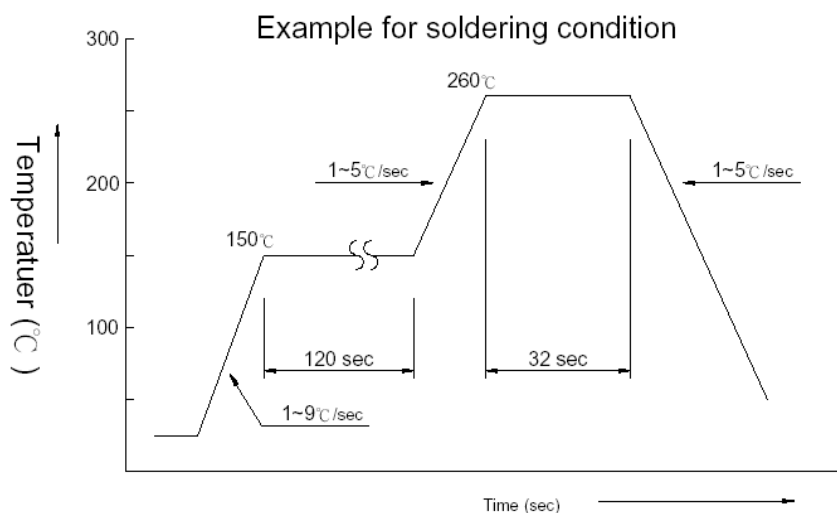
MF1005T SERIES – Thin Film Ceramic Chip Inductors



PART NUMBER	INDUCTANCE (nH) 100MHz	Tolerance (% or nH)	Q Min.	SRF (GHz) Min.	DCR (Ω) (Max.)	IDC (mA) (Max.)
MF1005T-8N2□-LF	8.2	0.1/0.2/0.3nH	13@500MHz	5.5	1.25	220
MF1005T-9N1□-LF	9.1	0.1/0.2/0.3nH	13@500MHz	5.5	1.25	220
MF1005T-10N□-LF	10	1/2/3/5%	13@500MHz	4.5	1.35	200
MF1005T-12N□-LF	12	1/2/3/5%	13@500MHz	3.7	1.55	180
MF1005T-15N□-LF	15	1/2/3/5%	13@500MHz	3.3	1.75	130
MF1005T-17N□-LF	17	1/2/3/5%	13@500MHz	3.1	1.95	100
MF1005T-18N□-LF	18	1/2/3/5%	13@500MHz	3.1	2.15	100
MF1005T-22N□-LF	22	1/2/3/5%	13@500MHz	2.8	2.65	90
MF1005T-27N□-LF	27	1/2/3/5%	13@500MHz	2.5	3.25	75
MF1005T-33N□-LF	33	1/2/3/5%	13@500MHz	2.5	3.75	75

- Inductors tolerance range : 0.1nH ; 0.2nH ; 0.3nH ; ±1% ; ±2% ; ±3% ; ±5%.
- Test equipment : Agilent/HP-4287A LCR meter or equivalent .
- Packing : 7" reel, machine-ready ,embossed plastic tape (10,000 parts per full reel).
- Operating Temperature Range : -40°C to +105°C

SOLDERING PROFILE



Solder : Sn96.5/Ag3/Cu0.5