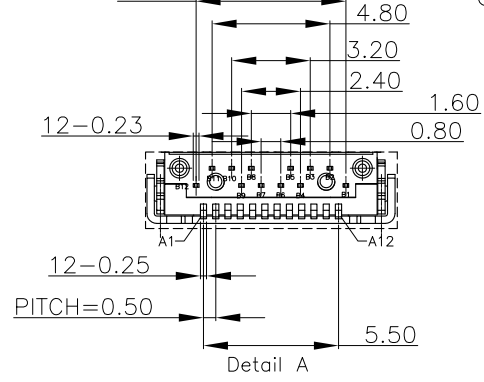
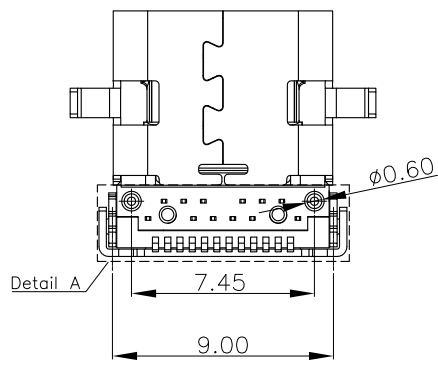
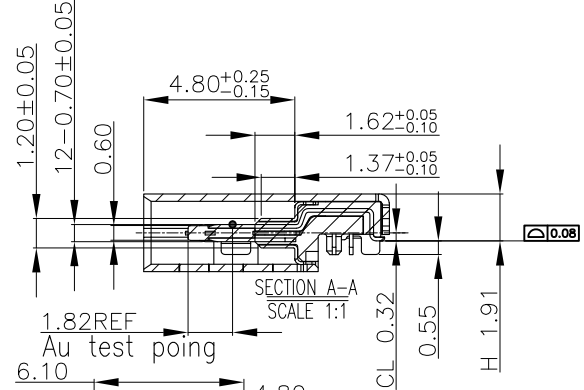
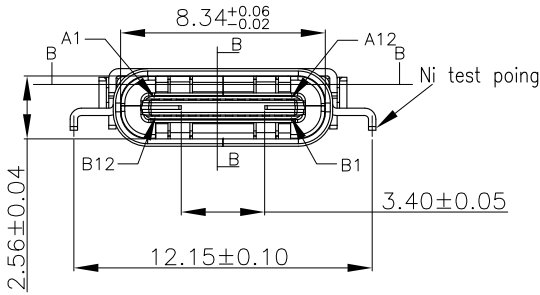
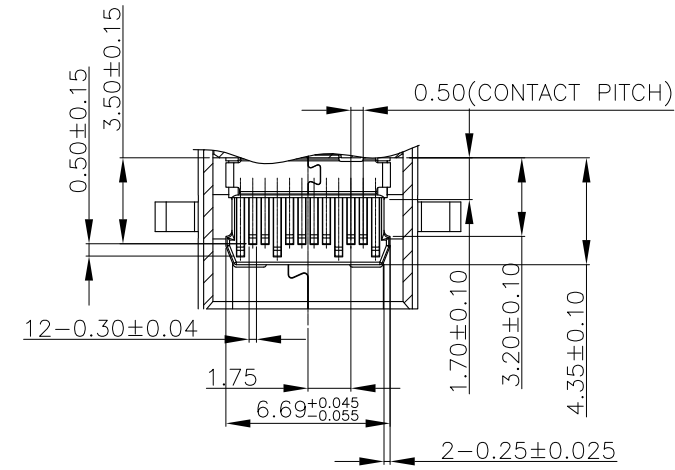
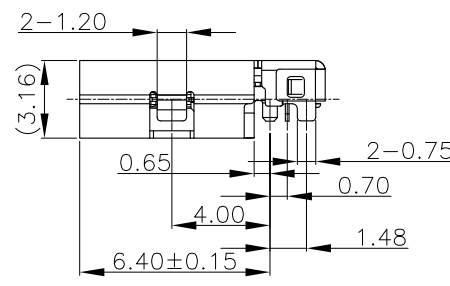
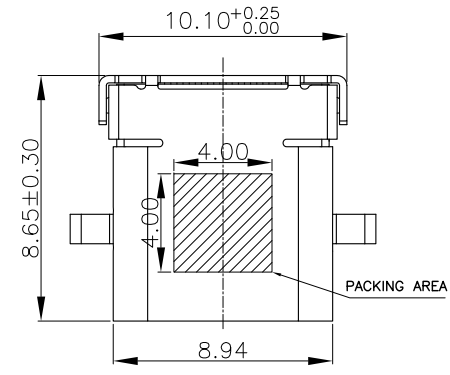


RoHS Compliant

USB 3.1 C TYPE RECEPTACLE MIDDLE BOARD CONNECTOR DIP+SMT TYPE

REV	DATE	DESCRIPTION	ECN NO.	NAME
A	18.05.21	PROPOSAL		WCQUAN



NOTES:
 1.MECHANICAL:
 INSERTION: 5~20N.
 EXTRACTION: 6~20N.
 DURABILITY: 10000 CYCLES
 2.ELECTRICAL:
 CURRENT: 5A MIN FOR VBUS;
 0.25A MIN FOR OTHER.
 VOLTAGE: 20 V MAX
 WITHSTANDING VOLTAGE: 100V AC.
 CONTACT RESISTANCE: 40mΩ MAX.
 INSULATION RESISTANCE: 100MΩ MIN.

GENERAL TOLERANCE ± 0.25mm	WIESON TECHNOLOGIES CO., LTD		PART NO.: G3518-12*****-00	
	DRAWN BY	WCQUAN(WSC)	DRAWING NO.	G3518-12*****-00
GENERAL ANGLE TOLERANCE ± 3°	CHECKED BY	HHuan	DRAWING SIZE	A4
	APPROVED BY	KEN	UNIT	mm
⊕	SORTING NO.	CA0059(WSC)	PAGE	1 OF 2

RoHS Compliant

USB 3.1 C TYPE RECEPTACLE MIDDLE BOARD CONNECTOR DIP+SMT TYPE

REV	DATE	DESCRIPTION	ECN NO.	NAME
A	18.05.21	PROPOSAL		WCQUAN

MATERIAL:

HOUSING: SEE ORDER INFORMATION (UL94V-0)
 HOUSING COLOR: SEE ORDER INFORMATION
 TERMINAL: COPPER ALLOY
 TERMINAL PLATING: SELECTIVE Au IN CONTACT AREA,
 80u" min. Sn IN SOLDER TAIL AREA,
 BOTH OVER 30u" min. Ni UNDER
 PLATED OVERALL
 SHELL: SEE ORDER INFORMATION
 SHELL PLATING: Ni PLATED
 SHLD: SUS304-H,T=0.12±0.03mm

ORDER INFORMATION
 G3518-12** ** *-00

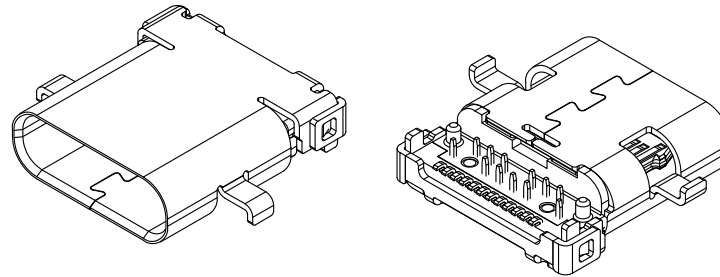
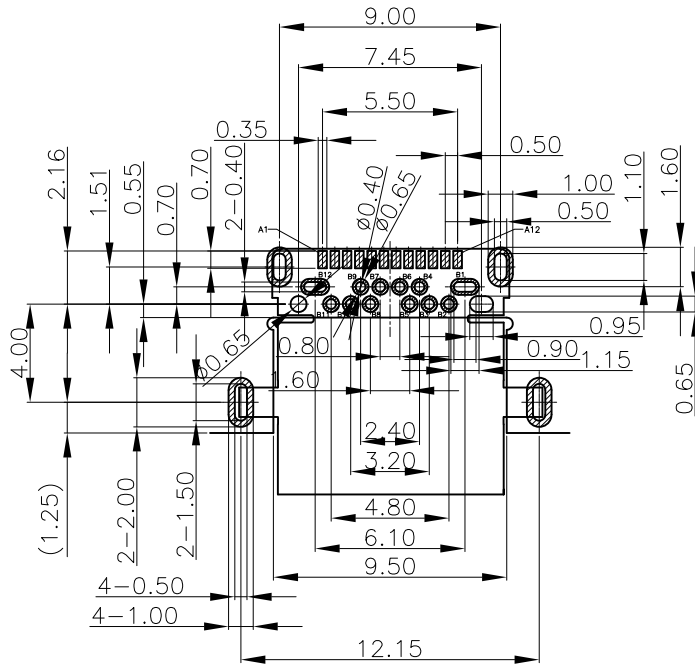
HOUSING MATERIAL & COLOR
 00: LCP; BLACK

TERMINAL PLATING
 01: GOLD FLASH
 02: 30u" Au

SHELL PLATING
 00: SUS304-H,T=0.30±0.03mm

USB TYPE-C FULL-FEATURED RECEPTACLE INTERFACE PIN ASSIGNMENTS

PIN	Signal Name	Description	PIN	Signal Name	Description
A1	GND	Ground return	B12	GND	Ground return
A2	SSTXp1	Positive half of first SuperSpeed TX differential pair	B11	SSRXp1	Positive half of first SuperSpeed RX differential pair
A3	SSTXn1	Negative half of first SuperSpeed TX differential pair	B10	SSRXn1	Negative half of first SuperSpeed RX differential pair
A4	VBUS	Bus Power	B9	VBUS	Bus Power
A5	CC1	Configuration Channel	B8	SBU2	Sideband Use (SBU)
A6	Dp1	Positive half of the USB 2.0 differential pair-Position 1	B7	Dn2	Negative half of the USB 2.0 differential pair-Position 2
A7	Dn1	Negative half of the USB 2.0 differential pair-Position 1	B6	Dp2	Positive half of the USB 2.0 differential pair-Position 2
A8	SBU1	Sideband Use(SBU)	B5	CC2	Configuraation Channel
A9	VBUS	Bus Power	B4	VBUS	Bus Power
A10	SSRXn2	Negative half of second SuperSpeed RX differential pair	B3	SSTXn2	Negative half of second SuperSpeed TX differential pair
A11	SSRXp2	Positive half of second SuperSpeed RX differential pair	B2	SSTXp2	Positive half of second SuperSpeed TX differential pair
A12	GND	Ground return	B1	GND	Ground return



RECOMMENDED P.C.BOARD HOLE LAYOUT

NOTE: P.C.B LAYOUT TOLERANCE: ±0.05mm

GENERAL TOLERANCE ± 0.25mm	WIESON TECHNOLOGIES CO., LTD		PART NO.: G3518-12*****-00	
	DRAWN BY	WCQUAN(WSC)	DRAWING NO.	G3518-12*****-00
GENERAL ANGLE TOLERANCE ± 3°	CHECKED BY	HHuan	DRAWING SIZE	A4
	APPROVED BY	KEN	UNIT	mm
SORTING NO.	CA0059(WSC)	PAGE	2 OF 2	