



SMD Shielded Power Inductors - SEP1211EM-A SERIES



PART NUMBERING SYSTEM

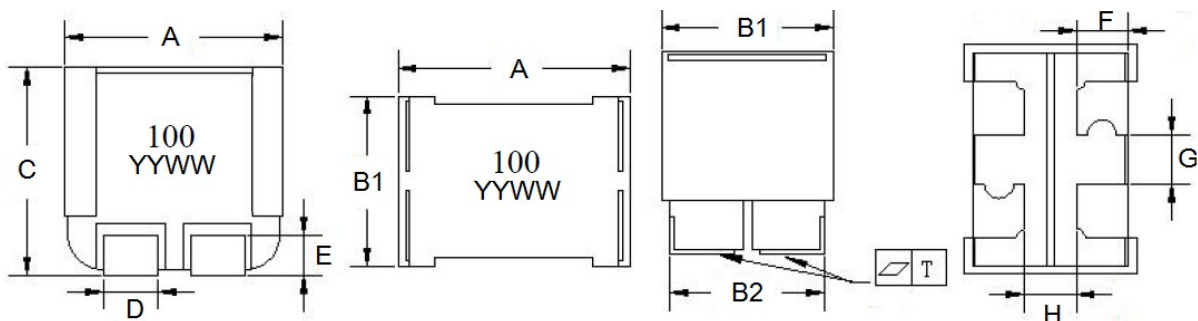
SEP	1211EM	—	150M	—	LF	—	A
TYPE	DIMENSIONS		INDUCTANCE		LEAD FREE		

FEATURES :

- Magnetically shielded and low DC resistance.
- Optimal design realizes high quality sound and low distortion.
- Minimizes board space requirements .
- Low coupling for minimal cross-talk between inductors.
- 100% Lead(Pb)-Free and RoHS compliant with High reliability -Reliability test complied to AEC-Q200.

SHAPES AND DIMENSIONS:

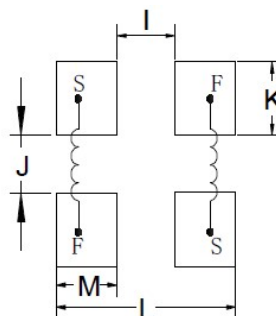
UNIT : mm



A=12.0±0.2 B1=9.6±0.2 B2=8.7±0.25 C=11.3±0.3 D=2.8±0.1 E=2.3±0.3 F=2.5±0.3 G=1.95±0.15 H=3.4Min. T=≤0.15

RECOMMENDED PATTERNS:

UNIT : mm



I=2.9 J=1.5 K= 3.3 L=9.7 M=3.4



SMD Shielded Power Inductors - SEP1211EM-A SERIES



SPECIFICATION TABLE

PART NUMBER	INDUCTANCE (μH)	Isat (A) (Typ.)	Irms (A) (Min.)	DCR (mΩ) (Typ.)	DCR (mΩ) (Max.)
SEP1211EM-R43M-LF-A	0.43±20%	38.0	27.0	1.90	2.30
SEP1211EM-5R6M-LF-A	5.60±20%	11.0	7.50	20.0	23.0
SEP1211EM-7R5M-LF-A	7.50±20%	10.0	6.80	25.0	28.0
SEP1211EM-100M-LF-A	10.0±20%	7.40	5.60	30.5	32.6
SEP1211EM-150M-LF-A	15.0±20%	5.50	4.60	43.5	45.5
SEP1211EM-220M-LF-A	22.0±20%	5.00	4.00	62.0	74.4

- Test frequency : Ls : 100KHz /1.0V.
- All test Data is referenced to 25°C ambient.
- Heat Rated Current (Irms) will cause the coil temperature rise approximately ΔT of 40°C
- Typical Saturation DC Current would cause Lo to drop approximately 30%
- Operating temperature -55~+155°C (Including self - temperature rise)